

Sunshine Coast Accessible Holiday Accommodation

The accessibility of the accommodation below has been verified in person by 121 Care staff. 121 Care has not accepted any financial or commercial incentives to include these accommodation providers on our list.

If your facility offers wheelchair accessible holiday accommodation, and would like to be included on our list, please contact us via email contact@121care.org.au or phone 07 5443 9777.

CALOUNDRA

Windward Passage

- Ocean view – Accessible Apartments Caloundra
- 4 bedroom, can accommodate 7, level 5
- Fully accessible apartment with wheel-in shower, hoist, shower commode chair, large balconies, living areas and kitchen, fully self-contained.
- 4th bedroom has single electric bed



Contact:

Tel: 07 5492 3666
 Website: <http://www.windwardpassage.com.au/>
 Address: 31 Landsborough Parade, Caloundra, Queensland, 4551

Oaks Oasis Resort

- 2 types of accessible units, hotel style.
- 1 with balcony and 1 without
- King size bed which splits into 2 singles
- Both units are wheelchair accessible
- Bathrooms are spacious with a roll-in shower
- There is a hand held shower
- Restaurant and bar - accessible
- Large water park for children
- Separate pool - no ramp into pool
- Air conditioned
- Very well laid out grounds with accessible pathways from all facilities
- 4 star rating and close to the town centre and beach



Contact:

Tel: 1300 031 963
 Email: oasis@theoaksgroup.com.au
 Website: www.oakshotelsresorts.com/oaks-oasis
 Address: 2 North St, Caloundra, Queensland, 5441

Big 4 Caloundra Holiday Park

- 2 spacious cabins
- Both completely accessible for all levels of disability
- Queen size bed
- 2 bedrooms, accommodates 4
- Large bathrooms with roll-in showers
- There is a hand held shower
- Air conditioned
- The park is well set out with many children's facilities and is close to the shopping centre
- Located on the Pumicestone Passage
- The park is in a fantastic position on the water with accessible walkways



Contacts:

Tel: 1800 550 138, 07 5491 1564

Fax: 07 5492 6938

Website: www.caloundraholidaypark.com.au

Address: 44 Maloja Ave, Caloundra, Queensland, 5441

Grand Pacific Caloundra

- 1 large 3 bedroom fully self-contained 11th floor unit
- Fully accessible for all levels of disability
- Large main bedroom with king bed which splits into singles and the ensuite is accessible with roll-in shower
- There is a hand held shower
- Bedroom 2 has 1 electric king single bed and 1 single bed
- Bedroom 3 has a queen bed
- There is an electric hoist and a commode chair available in the unit
- 4 star accommodation
- Air conditioner
- Centre of town and close to beach and shopping centre



Contact:

Tel: 1300 987 602, 07 5665 4450

Fax: 5665 4433

Website: www.breakfree.com.au/grand-pacific

Address: 100 Bulcock Street, Caloundra, Queensland 4551

Ocean View Resort

- 2 units both 1 bedroom hotel style
- Fully accessible for all levels of disability
- Spacious accessible bathroom with roll in shower
- There is a hand held shower
- Queen size bed
- Accessible rooftop
- 4 star accommodation
- Air conditioner
- Centre of town and close to beach and shopping centre



Contacts:

Tel: 07 5491 1788
 Email: res@oceanviewsresort.com.au
 Website: <http://www.oceanviewsresort.com.au/>
 Address: Centaur St & Bulcock St, Caloundra, Queensland, 4551

Shearwater Resort

- 1 Small 2 bedroom unit which is negotiable by manual wheelchair but would be difficult with an electric wheelchair
- Bathroom has a roll in shower but the toilet facility is separate and would be hard to negotiate in commode or shower chair and it may be too small to close the door. There is a hand held shower.
- Main bedroom has a queen size bed but only accessible by wheelchair on the right side of the bed
- 2nd bedroom has 2 single beds
- Air conditioner
- Balcony with partial views
- Located across from one of Caloundra's most popular beaches - Kings Beach



Contacts:

Tel: 07 5491 5355
 Email: stay@shearwaterresort.com.au
 Website: www.shearwaterresort.com.au
 Address: 79 Edmund St, Caloundra, 5441

La Promenade

- 2 Bedroom fully self-contained unit
- Bathroom is fully accessible for all levels of disability with a roll in shower and a handheld shower
- Main bedroom has a queen size bed
- 2nd bedroom has 2 single beds
- There is a spa in the living area which overlooks the water
- Balcony is accessible and also has great views over the water and Bribie Island
- Air conditioner
- Excellent location right on the water at Pumicestone Passage and in the centre of town
- Close to shops and shopping centre
- The Boardwalk is just outside the door which follows a path to the Caloundra beaches



Contacts:

Tel: 07 5499 7133
 Email: info@lapromenade.com.au
 Website: www.lapromenade.com.au
 Address: 4 Tay Avenue, Caloundra, 4551

Portobello - Dicky Beach Caloundra

- Large 1 bedroom fully self-contained unit
- Roll in shower but area to manoeuvre a commode chair over the toilet is restricted and may not suit some longer rear wheel propelled commode chairs
- Has large accessible deck and is nicely positioned by the pool area
- Air conditioner
- Close to beach and shops



Contacts:

Tel: 1800 242 515, 07 5491 9038
 Fax: 07 5439 4199
 Email: info@portobellobythesea.com.au
 Web: www.portobellobythesea.com.au

Norfolks on Moffat

- Selection of Spacious 1, 2 or 3 bedroom fully self-contained apartments
- Bedrooms have queen beds
- Bathrooms have roll in hand held showers
- One has an accessible balcony
- One has a roof track hoist over bed for transfers
- Air conditioned
- Ideally located close to beach, shops and restaurants
- 4 star accommodation



Contacts:

Tel: 07 5492 6666, or 1800 068 798
 Fax: 07 5436 6988
 Email: info@norfolks.com.au
 Website: www.norfolks.com.au
 Address: 32 Queen of Colonies Parade, Moffat Beach, Queensland, 4551

MAROOCHYDORE & MOOLOOLABA

Silver Sea on Sixth Resort

- Large 3 bedroom fully self-contained unit
- Main bed has king size bed
- Other 2 bedrooms are large and have split king size beds
- Ensuite to main bedroom does not have a roll in shower but there is a common bathroom which has a roll in hand held shower
- Toilet in the same room as the roll in shower but is close by and is large enough to accommodate a commode chair with the door closed
- Very large deck
- Air conditioner
- Good location close to beach, shops, walks and restaurants
- 4 star accommodation



Contacts:

Tel: 07 5451 1200
 Email: info@silversearesort.com.au
 Web: www.silversearesort.com.au
 Address: 106 Sixth Ave, Maroochydoore, Queensland, 4558

Cilento – Mooloolaba

- Median sized fully self-contained 2 bedroom apartment
- Main bedroom has queen bed with ensuite and roll in and hand held shower suitable for all levels of disability
- 2nd bedroom has 2 single beds
- Balcony has view of the street but is situated just behind the main shopping area of Mooloolaba
- Air conditioner
- Very close to beach and all of Mooloolaba's night venues
- 4 star accommodation



Contacts:

Tel: 07 5457 9100, or 1300 722 363
 Fax: 07 5457 9106
 Email: info@cilentomooloolaba.com.au
 Website: www.cilentomooloolaba.com.au
 Address: 19 First Ave, Mooloolaba, 4557

Nautilus Resort Mooloolaba

- Ground floor small fully self-contained 2 bedroom apartment
- Main bedroom has queen size bed
- 2 bedroom has 2 singles
- Bathroom has roll in and hand held shower and is suitable for all levels of disability
- Has small accessible outdoor patio area
- Air conditioner
- Close to beach, shops and marina
- 3 star accommodation



Contacts:

Tel: 07 5444 3877, or 1800 646 439
 Email: reception@nautilusmooloolaba.com
 Website: www.nautilusmooloolaba.com
 Address: 30-32 River Esplanade, Mooloolaba, Queensland 4557

Eloura Tower

- Ensuite
- Fully equipped kitchens, including microwave and dishwasher
- Washing Machine and Dryer
- CD and DVD player
- Internet Access available
- Cable TV
- Direct dial telephone



Contacts:

Tel: 07 5443 5988
 Email: holiday@eloueratower.com.au
 Website: <http://www.eloueratower.com.au/>
 Address: 81 Sixth Ave, Maroochydoore, Queensland, 4558

Space Holiday Apartments

- Very spacious 2 bedroom apartments
- Main bedroom is very large with a queen bed
- Ensuite is roll in and hand held shower with restrictions. Would suit assistant propelled
- commode chair and may suit compact self-propelled commode chair
- 2nd bedroom has 2 single beds
- Air conditioned
- Accessible balcony with views over the mouth of the Maroochydoore River
- Close to shops, beach, restaurants and Ocean Street night life
- 4 ½ star accommodation



Contacts:

Tel: 07 5430 0000
 Email: stay@spaceholidayapartments.com.au
 Website: www.spaceholidayapartments.com.au
 Address: 45-47 The Esplanade, Maroochydoore, Queensland, 4558

NOOSAVILLE

Anchor Motel Noosaville

- 1 bedroom unit
- Queen size bed
- Walk In Shower with safety bars
- Air Conditioning
- Free in-room internet
- Garage
- Free Parking

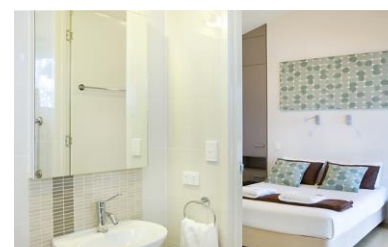


Contacts:

Tel: 07 5449 8055
 Fax: 07 5449 8488
 Website: www.anchorhotelnoosa.com.au/
 Email: reception@anchormotelnoosa.com.au
 Address: 223 Weyba Rd, Noosaville, Queensland, 4566

Eumarella Shores Noosa Lake Retreat

- 2 x bedroom cabin set in a lush rainforest situated on the shores of Lake Weyba
- Main bedroom has queen size bed
- The ensuite is spacious with roll in hand held shower accessible for all levels of disability
- 2nd bedroom has 2 single beds with can be made into a king size bed
- Fully self-contained with laundry and kitchen facilities and a veranda with a BBQ.
- A fireplace is costily situated in the living area
- Very remote and private
- Grounds feature wallabies and kangaroos
- Air conditioned
- Luxury accommodation by the lake
- 5 Star accommodation



Contacts:

Tel: 07 5449 1738
 Email: stay@eumarellashores.com.au
 Website: www.eumarellashores.com.au/
 Address: 251 Eumarella Rd, Weyba Downs, 4562

MALENY

Maleny Luxury Cottages

- Open land living, purpose built with 1 bedroom – 2 beds
- Queen bed
- Bathroom has roll in shower with hand held shower with hand rails suitable for all levels of disability
- There are ramps for ease of access
- Air conditioned
- Heating
- Views are fantastic
- This is in a remote position in the Sunshine Coast Hinterland
- Maleny is the closest town



Contacts:

Tel: 07 5435 8300
 Fax: 07 5435 8311
 Email: info@malenyluxurycottages.com.au
 Website: www.malenyluxurycottages.com.au/
 Address: 383 Curramore Rd, Curramore, Queensland, 4552

LANDSBOROUGH

Ocean Views Tourist Park

- 1 x Queen size bed, 1 x sofa bed and 2 x bunk beds in open plan cabin
- Basic self-contained accommodation with ramp access
- Bathroom has roll in hand held shower
- Living, kitchen and bedroom all in one and includes kitchenette and TV
- 3kms west of Landsborough heading towards Maleny with rural setting and partial ocean views
- Air conditioned



Contacts:

Tel: 07 5494 1171
 Email: info@oceanviewtouristpark.com.au
 Website: www.oceanviewtouristpark.com.au/
 Address: 2 Old Maleny Rd, Landsborough, Queensland, 4550

GLASSHOUSE MOUNTAINS

Braeside Bed & Breakfast

- 1 large room with queen bed
- Bathroom has a roll in shower with hand held shower and hand rails suitable for all levels of disability
Air conditioning
- Large open plan shared living area with magnificent views overlooking the Glasshouse Mountains
- Very luxurious accommodation
- 5 star accommodation



Contacts:

Tel: 07 5494 3542
 Email: enquiries@braesidebnb.com.au
 Website: <http://braesidebnb.com.au/>
 Address: 305 Maleny Stanley River Rd, Maleny, Queensland, 4552

GYMPIE

Lagoon Pocket Bed & Breakfast La

- 1 x Bedroom Cottage with patio
- Queen size bed with cot bed in the same room
- Large bathroom with roll in hand held shower suitable for all levels of disability
- Path from carport to cabin is gravel (approx. 10mts)
- Air conditioning
- Clean and neat in a rural setting
- 4 ½ star accommodation
- 1 x Queens



Contacts:

Tel: 07 5483 2112
 Email: relax@lagoonpocket.com
 Website: <http://lagoonpocket.com/>
 Address: 57 Lagoon Rocket Rd, Lagoon Pocket, Queensland, 4570

AMAMMOOR

Amamoor Lodge, Bed & Breakfast

- 1 Bedroom
- Queen bed
- Large ensuite with roll in hand held shower is suitable for all levels of disability however linked between the bedroom and the ensuite is a short steep ramp and would normally need help from someone to negotiate.
- Building is homestead style in a rural setting with a surrounding veranda.
- Living and kitchen area is communal and features fireplace and nice views
- Air conditioned
- 4 ½ star accommodation



Contacts:

Tel: 07 5484 3500
 Email: stay@amamoorlodge.com.au
 Website: www.amamoorlodge.com.au/
 Address: 368 Kandanga Amamoor Rd, Amamoor, Queensland, 4570

MARY VALLEY

Honey Bee Farm

- 3 Large 2 x Bedroom cabins
- Main room queen size bed
- 2nd room 2 x single beds
- Large ensuite with roll in hand held shower
- Large halls and doorways
- Fans
- 1 cabin is completely purpose built for accessibility and has room for an electric hoist under the bed
- Set in large rural acreage and features a hall with a commercial kitchen (available for use), half-court basketball court, dam with gazebo and a BBQ picnic area with fire pit.
- All areas of the property are interconnected with concrete paths and has accessible toilets available outdoors.



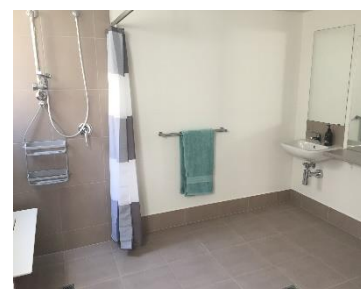
Contacts:

Tel: 07 5484 3550
 Mobile: 0418 758 456
 Email: info@honeybeefarm.com.au
 Website: www.honeybeefarm.com.au/
 Address: 20 Hasthorpe Road, Gympie, Queensland

MUDJIMBA

Access Mudjimba Shores

- 1 bedroom ground floor unit
- Queen sized hi-lo bed with pressure care mattress
- Double sofa bed in lounge room
- Sleep maximum 3 people
- Kitchenette with fridge, microwave, toaster, kettle
- Extra wide door ways
- Spacious accessible bathroom with roll in shower and chair
- Laundry facilities
- Linen, blankets and towels provided
- Eco cleaning products used throughout
- On site manager upstairs with disability carer experience
- Wall-mounted TV and free Wi-fi
- CD-Radio-Bluetooth micro stereo system
- Air Conditioning – reverse cycle
- Dogs Allowed with small secured court yard
- Off street parking
- Close to beach, cafes, park, BBQ facilities



Contacts:

Tel: 0412 285 116
 Email: info@accessmudjimbashores.com
 Website: www.accessmudjimbashores.com
 Address: Unit 1/9 Mudjimba Esplanade, Mudjimba QLD 4564